



**Electrolux**  
PROFESSIONAL

**Flexy Compact**  
**Heated Plate Dispenser Trolley, 2**  
**cylinders - Ø180-250 mm, 1 tray slider,**  
**h.900**

ITEM # \_\_\_\_\_

MODEL # \_\_\_\_\_

NAME # \_\_\_\_\_

SIS # \_\_\_\_\_

AIA # \_\_\_\_\_



**322126 (F33HAW)**

Heated Plate Dispenser  
Trolley, double cylinder, tray  
slider on one side, plate  
diameter 180-250 mm,  
H=900

### Short Form Specification

**Item No.** \_\_\_\_\_

Plate lowerator suitable to warm, transport and distribute plates.  
Two cylinders plate lowerator: each cylinder can accommodate  
plates up to 250 mm diameter. Sturdy construction with  
laminated panelings on 4 sides. Tray slider in tubular stainless  
steel is installed on the customer side and it can also be folded  
down to facilitate passage of the units through doorways. Unit  
has 2 shelves to accomodate GN containers (not included) for  
cutlery and bread and one shelf to accomodate glasses.

### Main Features

- CB and CE certified by a third party notified body.
- Plate lowerator suitable to warm, transport and distribute plates.
- Sprung cylinders allow plates of different weights to be stacked.
- Two cylinders plate lowerator: each cylinder can accommodate plates up to 250 mm diameter.
- Perfect compact design makes it ideal for space saving environments.
- Tray slider in tubular stainless steel is installed on the customer side and it can also be folded down to facilitate passage of the units through doorways.
- Ideal for servery lines with an operator.

### Construction

- Sturdy construction with laminated panelings on 4 sides.

**APPROVAL:** \_\_\_\_\_



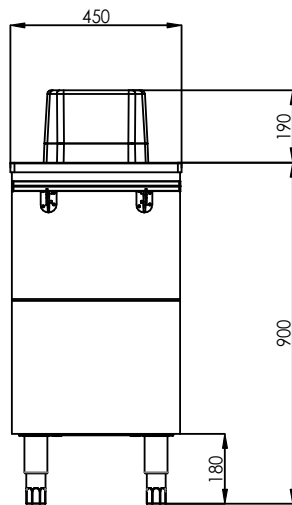
Experience the Excellence  
[www.electroluxprofessional.com](http://www.electroluxprofessional.com)



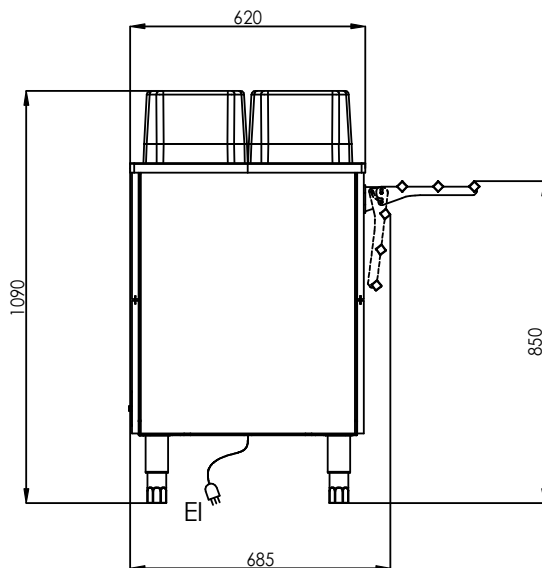
**Electrolux**  
PROFESSIONAL

**Flexy Compact**  
**Heated Plate Dispenser Trolley, 2 cylinders**  
**- Ø180-250 mm, 1 tray slider, h.900**

Front

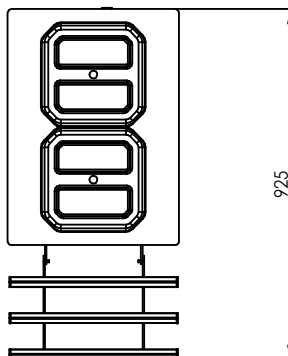


Side



EI = Electrical inlet (power)

Top



**Electric**

Supply voltage: 220-240 V/1N ph/50/60 Hz  
Electrical power, max: 1.62 kW

**Key Information:**

External dimensions, Width: 925 mm  
External dimensions, Depth: 450 mm  
External dimensions, Height: 1090 mm  
Net weight: 60 kg  
Wheel material:  
Wheel diameter: